



JingAn Heavy Industry

徐州景安重工机械制造有限公司

Xuzhou JingAn Heavy Industry Manufacture Co.,Ltd.



徐州经济技术开发区206国道东侧大庙村西口
West entrance of Damiao Village, east of 206 National Highway,
Xuzhou Economic and Technological Development Zone



+86516-87896588 13905210686



13905210686@163.com

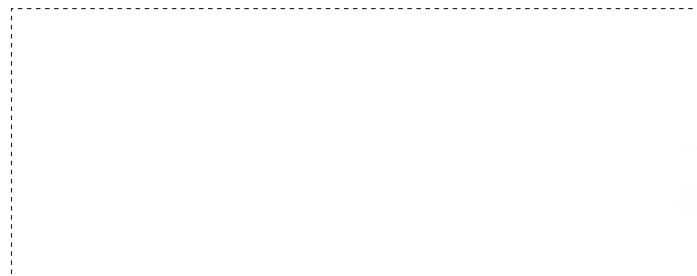


FAX +86516-87896588



www.xzjazg.com

请联系景安重工销售公司与当地经销商 Please contact the business company and the local agents:



本产品随技术进步将不断改进, 如有修改, 恕不另行通知。样本图片与实物不符的, 以实物为准。
Under our policy of continuous product development and improvement,
we reserve the right to change specifications and design without prior notice.

JingAn Reverse Circulation Drilling Machine

景安·气举反循环钻机



徐州景安重工机械制造有限公司
Xuzhou JingAn Heavy Industry Manufacture Co.,Ltd.

气举反循环钻机介绍

Reverse Circulation Drilling Machine

适用范围:

气举反循环钻机适用于大口径、超深桩或嵌岩桩等复杂地质条件的钻孔施工。广泛应用于陆上大型建筑、港口码头、堤岸防护、桥梁、海上风电等桩基钻孔，是其它桩工设备的替代产品。

性能特点:

- 1.全液压大功率动力头，扭矩大，适用各种地层的钻孔，特别适用于硬岩等地层的施工。
- 2.全液压无级调速，根据工况调整泵和马达排量，恒功率控制的液压泵与柴油机输出功率匹配，充分发挥柴油机的性能，节省燃油。
- 3.采用大功率柴油机动力，适合野外及海上等无动力电源施工。
- 4.可倾斜龙门架、动力头，结构紧凑，方便拆装钻杆和钻头，安全可靠。
- 5.彩色液晶显示器的控制器，监视柴油机和系统的工作状态，安全直观。
- 6.模块化结构，方便拆解运输。
- 7.高强度操作室，保护操作人员的安全。
- 8.自动钻进、恒压钻进、手动钻进多种工作模式，适应各种复杂地质条件施工。

Scope of application:

Reverse Circulation Drilling Machine is suitable for large diameter, ultra-deep or rock-socked pile and other complex geological conditions of drilling construction. It is widely used in drilling pile foundation of land large buildings, harbor, wharf, embankment protection, bridge, offshore wind power station and so on. It is an alternative product of other pile equipment.

Performance characteristics:

- 1.Full hydraulic power head, large torque, suitable for various stratigraphic environments, especially for hard rock and other strata construction.
- 2.Full hydraulic stepless speed regulation, according to the working conditions to adjust the pump and motor displacement, match the constant power hydraulic pump and diesel engine output power, make full use of the diesel engine performance, save fuel.
- 3.Using high-power diesel engine, suitable for field and offshore no-power-supply construction.
- 4.Tiltable gantry frame and power head, compact structure, easy-disassemble drilling pipe and bit, safe and reliable.
- 5.Color LED controller, monitor the working status of diesel engine and whole system, safe and intuitive.
- 6.Modular structure, convenient disassembly and transportation.
- 7.High strength operation room, protect the safety of operator.
- 8.Various working modes, such as automatic drilling, constant pressure drilling and manual drilling. Suitable for construction under various complicated geological conditions.



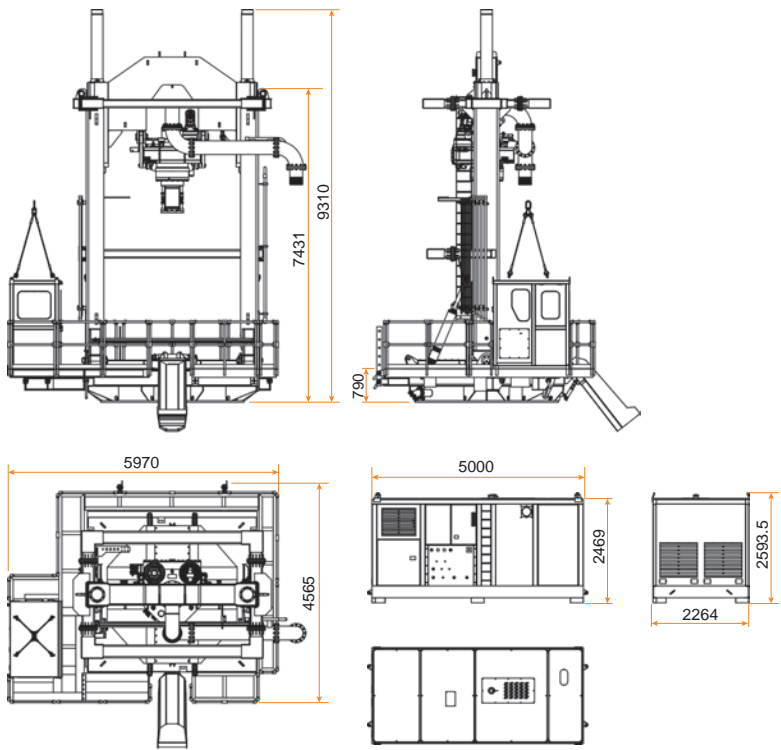
海上风电桩基施工



澳砂四桥直径2.8米，深度119米桩基施工

JRD200 气举反循环钻机

Reverse Circulation Drilling Machine

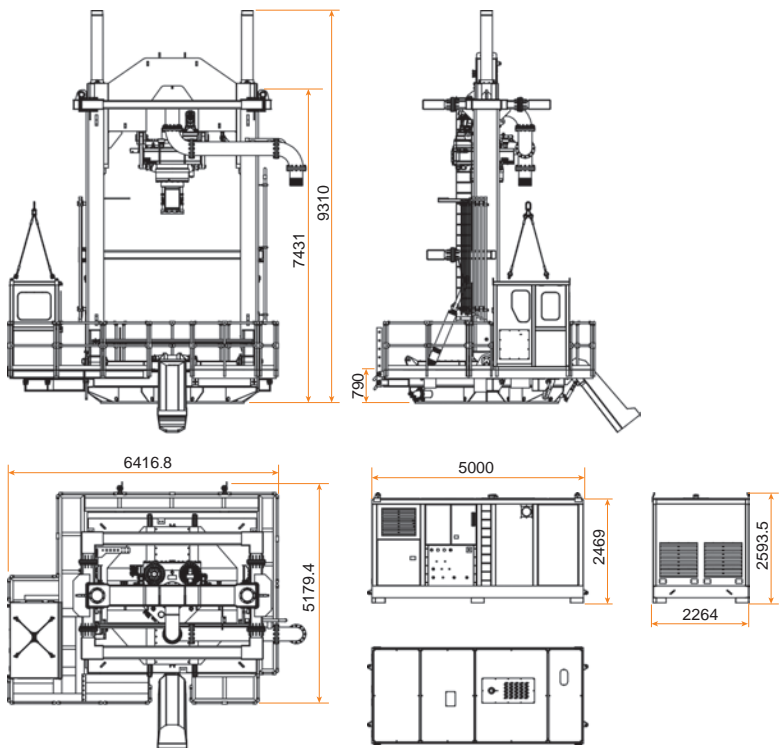


主要技术参数Main technical parameters:

名称Name	参数Parameter
最大钻孔直径 Maximum drilling diameter	2000 mm
发动机额定功率 Engine rating	260 hp
重量 Total Weight	22 t
升降油缸下压力 Downforce of lifting cylinder	680 kN
升降油缸举升力 Lifting force of lifting cylinder	1110 kN
升降油缸行程 Lifting cylinder stroke	3500 mm
动力头最大转速 Maximum speed of power head	33 rpm
最大转速扭矩 Maximum speed torque	100 kN*m
动力头最小转速 Minimum speed of power head	0~9 rpm
最小转速扭矩 Minimum speed torque	200 kN*m
动力站-主机液压胶管长度 Length of hydraulic hose from main machine to power station	15 m

JRD300 气举反循环钻机

Reverse Circulation Drilling Machine



主要技术参数Main technical parameters:

名称Name	参数Parameter
最大钻孔直径 Maximum drilling diameter	3000 mm
发动机额定功率 Engine rating	272 kw
重量 Total Weight	37 t
升降油缸下压力 Downforce of lifting cylinder	1130 kN
升降油缸举升力 Lifting force of lifting cylinder	1840 kN
升降油缸行程 Lifting cylinder stroke	3500 mm
动力头最大转速 Maximum speed of power head	23 rpm
最大转速扭矩 Maximum speed torque	145 kN*m
动力头最小转速 Minimum speed of power head	10 rpm
最小转速扭矩 Minimum speed torque	360 kN*m
动力站-主机液压胶管长度 Length of hydraulic hose from main machine to power station	15 m

气举反循环钻机钻具

Reverse Circulation Drilling Machine



钻具组装总图
General assembly of drilling tool



定制钻杆自动焊接机器人
Customized drill pipe automatic welding robot



钻杆焊接前预热，焊后保温，
确保焊接可靠
Drill pipe shall be preheated before welding
and insulated after welding to ensure reliable



钻杆成品密封试验，确保每一根钻杆质量
Seal test of finished drill pipe to ensure the quality of drill pipe



扩孔钻头，用于在钻进中扩大孔径
Reaming bit, used to enlarge the hole diameter in drilling



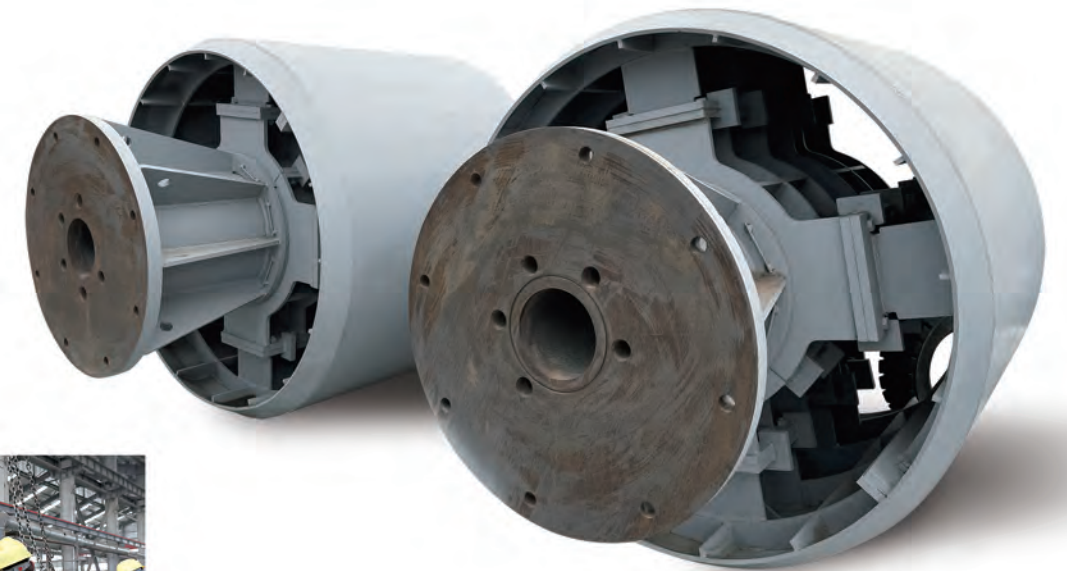
平钻头，用于常规钻进
Flat bit for conventional drilling



安装滚刀后的平钻头
Flat drill bit after installing hob

气举反循环钻机钻具

Reverse Circulation Drilling Machine



钻头导向器成品
Finished drill guide



组装中的钻头导向器
Drill guide in assembly



组装中的钻杆扶正器
Drill pipe centralizer in assembly



钻杆扶正器成品
Finished drill pipe centralizer

施工案例

Reverse Circulation Drilling Machine



海上风电桩基施工航拍图
Aerial photography of offshore wind power pile foundation



海上风电斜桩基础施工
Construction of inclined pile foundation for offshore wind power



海上风电直桩基础施工
Construction of vertical pile foundation for offshore wind power



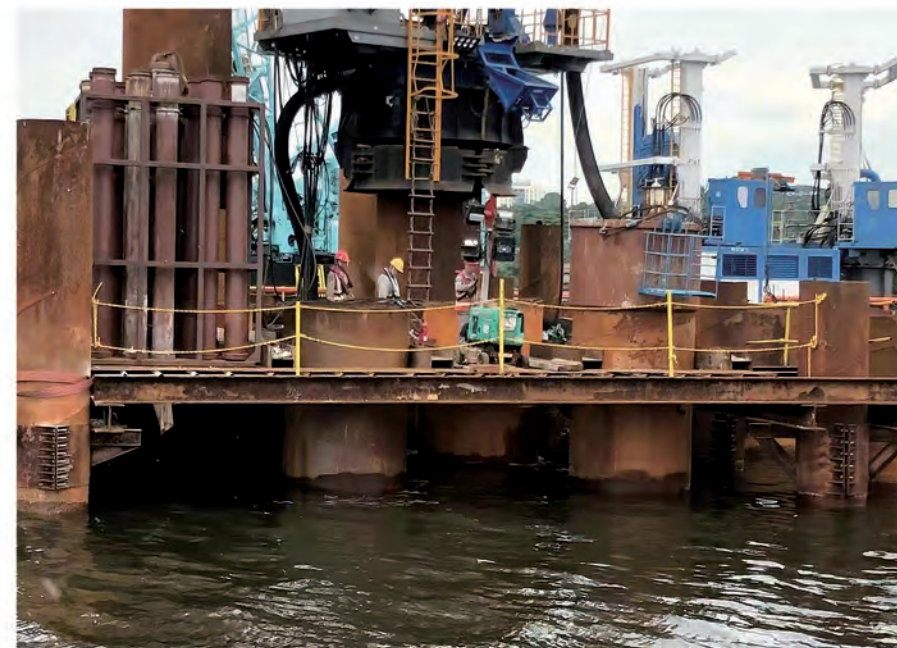
中国广核平潭大练岛风电桩基施工
Wind Power pile foundation construction of China Guanghe in Pingtan Bridge Liandao



三峡新能源阳江风电桩基施工
Wind power pile foundation construction in Three Gorges Yangjiang New Energy

施工案例

Reverse Circulation Drilling Machine



中国交建新加坡项目桩基施工
Offshore wind power pile foundation of China Jiaoqian in Singapore



澳门四桥桩基施工
Offshore wind power pile foundation in Macau-Taipa Bridge

